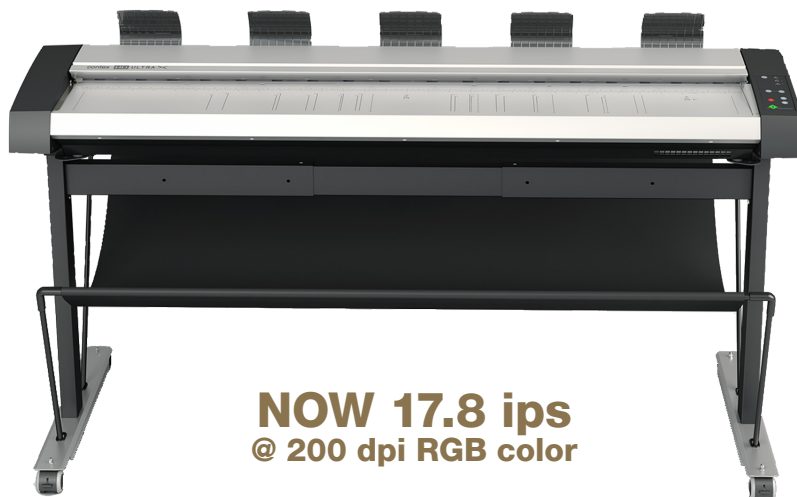


- the widest and fastest large format CCD scanner. Ever.

Redefined productivity.



**NOW 17.8 ips
@ 200 dpi RGB color**

- X **Productivity** – highest productivity, in the 60" wide scanner category
- X **Quality** – Best color match, sharp, crystal clear scans.
- X **Workflow** – designed for the way you work
- X **Green** – compliant with international environmental standards and certificates.

The widest and fastest CCD scanner

There are many obvious reasons to want the HD Ultra X 6000. For starters, it is a full 60 inches wide, which means it is the widest large format CCD scanner ever made. Secondly, it is ultra-fast with the ability to scan in RGB color in 200 dpi at up to 17.8 ips. That is new, too.

Best-in-class scan quality

With HD Ultra X 6000 you get the highest quality scans the market has to offer. Using the newest CCD technology and Contex's specially designed Fujifilm lenses, you get near-perfect color match and crystal clear scans. No matter if your originals are thick, thin, wide or creased. Furthermore, it will always be in focus with a depth of focus up to 7 mm (0.28 inches).

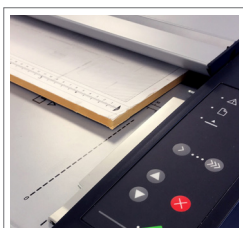
Time is money

That is why we're sure you will enjoy our new timesaving features. Instant-ON makes sure you don't need to warm up your scanner before using it. You feed your original into the scanner, and it turns on. As a bonus, it is good for the environment and reduces your electricity bill. HD Ultra X 6000 also has true size detection, which instantly detects your originals width and saves valuable time.

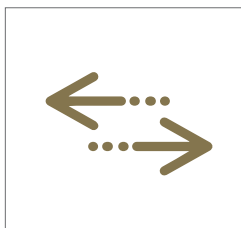
Award-winning software

With our Nextimage software, you get a more intelligent scanner with all the tools and settings you need to increase productivity and optimize your workflow.

 **Nextimage**



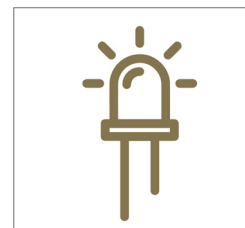
NEW OTAC system for super-fast scanner adjustment when scanning thick media.



New xDTR3 and xDTR2.5 technologies improve scanning speed - even in high resolution.



Use your smartphone or tablet, adapt your scanner settings to your own workflow.



Instant-ON equals no warm up time. Just feed and scan.



Almost 3.5 times faster than the HD 5450 PLUS. Up to 1054 scans per hour.

Wider, faster, sharper...

HD ULTRA >< 6000

	HD Ultra X 6050	HD Ultra X 6090
Maximum Scan Width	60 inch (1524 mm)	
Working height ¹	36.3 / 37.3 / 38.3 inches (922 / 947 / 972 mm)	
Scanning Speed² (inch/sec.)	Speed while scanning a 60-inch document	
200 dpi RGB Color	8.9 ips	17.8 ips
Upgradable to 17.8 inch/sec color	•	•
200 dpi Grayscale / Monochrome	17.8 ips	17.8 ips
Productivity (documents/hour)	Batch scanning for 60 minutes. Includes paper load and eject time. Measured in completed scans	
Arch E-size, RGB Color, 200dpi portrait load		866 scans / hour
Arch E-size, RGB Color, 200dpi landscape load		1054 scans / hour
Maximum Media Width	61.8 inch (1570 mm)	
Optical Resolution	1200 dpi	
Maximum Resolution	9600 dpi	
CCD Cameras	7 x 4 linier color CCDs (R,G,B and Gray)	
Depth of focus	7 mm	
Maximum Media Thickness	0.6 inch (15 mm)	
Accuracy	0.1% +/- 1 pixel	
Data Capture (color/mono)	48-bit color / 16-bit grey scale	
Color Space	Adobe RGB, Device RGB, RAW RGB, sRGB	
USB 3.0 with xDTR3	•	
Gigabit Ethernet with xDTR2.5	•	
Network workflow	Pull / Push	
Key technologies	FlexDoc, FlexFeed, SnapSize, SmartShare, ALE (Accuracy Lens Enhancement), AccuColor, OTAC, Perfect Light, Static Free Touchless Glass System	
Software ³	WIDSystem (driver): Nextimage 5 iOS app (portable device) Android tablet/phone OS also	
Fileformats ⁴	TIF, JPG, PDF, PDF/A, DWF, CALS, BMP, JPEG-2000(JP2), JPEG2000 Extended(JPX), TIF-G3, TIF-G4, multi-page PDF and others	
Device Drivers	64-bit TWAIN application driver included for use with EDM and other imaging software	
Nextimage TWAIN	64-bit TWAIN application driver included for use with EDM and other imaging software	
Power Requirements (Ready / Sleep Mode / Scanning)	Max 39W / 2W / 140W (built-in power supply)	
Weight & Dimensions	67 kg (148 lbs) / LxWxH: 1810mm (71.2") x 475mm (18.7" x 200mm (7.9"))	
Certifications/compliance	RoHS, cUL, CE, Customs Union, CCC, VCCI, KC, Ukr, ENERGY STAR certified	
Country of Origin	Designed and engineered in Denmark, manufactured in China	
TAA compliancy	TAA compliant scanners are for US customers only and are assembled in Denmark	

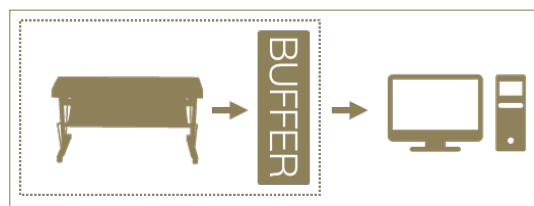
• = Included. ° = Upgradable.

1 Requires optional scanner stand.

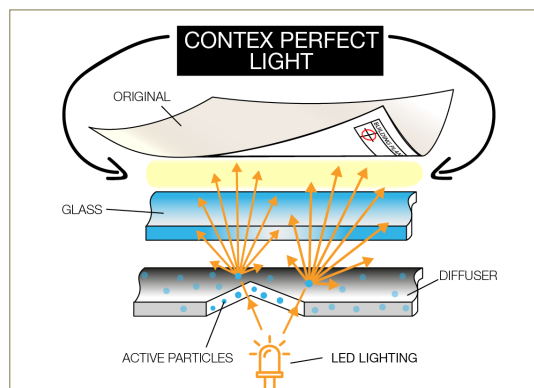
2 Context recommends Intel Core Duo, Core 2 Duo, or better processors, 8GB RAM + Fast-disk. Speed tests performed using Nextimage software, PC with Intel Core i7 4770K 3.5 GHz, 16 GB RAM, SSD - 1TB, USB 3.0 SuperSpeed and Win 64-bit.

3. Context applications create industry standard raster file formats that can be used in any CAD or GIS application.

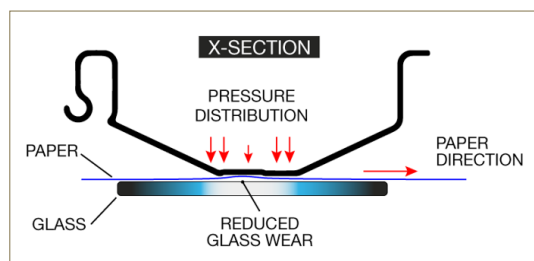
4. Requires optional Nextimage software.



Our 1 GB extreme buffer allows you to feed the scanner as fast as you can.

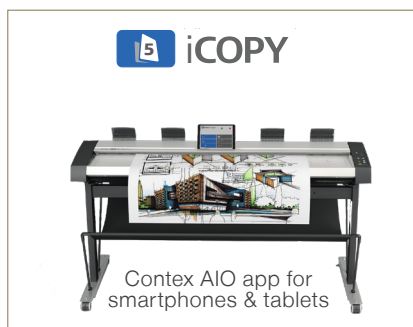


Leader in color reproduction.



New, static free, touchless glass system reduces maintenance and downtime.

The various solutions adapts to the way you work and fit seamlessly into your workflow.



Context solutions are compatible with all leading large format printers. Go to www.context.com and see the full list of printers.

Context Copenhagen
Denmark + HQ
Phone: +45 4814 1122
info@context.com

Context Americas
Virginia, USA
Phone: +1 (703) 964 9850
salesamericas@context.com

Context Japan & Asia
Yokohama
Phone: +81 3 3669 5515
info-japan@context.com

